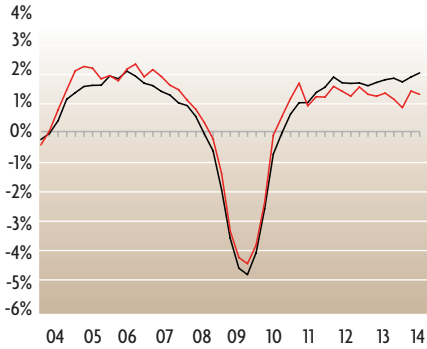


# STATE DATA, Q3:14

	DC	MD	NC	SC	VA	WV
<b>Nonfarm Employment (000s)</b>	<b>752.0</b>	<b>2,621.5</b>	<b>4,150.7</b>	<b>1,949.9</b>	<b>3,777.0</b>	<b>761.9</b>
Q/Q Percent Change	0.0	0.1	0.4	0.3	0.1	-0.5
Y/Y Percent Change	0.3	1.0	2.2	2.3	0.5	-0.5
<b>Manufacturing Employment (000s)</b>	<b>1.0</b>	<b>103.3</b>	<b>449.0</b>	<b>230.3</b>	<b>231.8</b>	<b>47.7</b>
Q/Q Percent Change	0.0	-0.3	0.4	0.1	0.0	-0.6
Y/Y Percent Change	0.0	-2.1	1.4	2.6	0.5	-1.8
<b>Professional/Business Services Employment (000s)</b>	<b>157.9</b>	<b>424.8</b>	<b>576.1</b>	<b>255.0</b>	<b>679.8</b>	<b>67.2</b>
Q/Q Percent Change	0.5	0.2	1.2	0.1	0.0	1.4
Y/Y Percent Change	0.9	1.9	4.9	4.8	0.3	3.4
<b>Government Employment (000s)</b>	<b>233.9</b>	<b>503.8</b>	<b>716.5</b>	<b>357.2</b>	<b>707.3</b>	<b>152.7</b>
Q/Q Percent Change	-0.5	0.0	0.0	0.4	0.3	-2.2
Y/Y Percent Change	-1.9	0.1	0.2	1.0	0.0	-1.3
<b>Civilian Labor Force (000s)</b>	<b>379.2</b>	<b>3,103.7</b>	<b>4,627.5</b>	<b>2,197.0</b>	<b>4,236.4</b>	<b>784.7</b>
Q/Q Percent Change	1.4	0.1	-0.1	0.8	-0.1	-0.8
Y/Y Percent Change	1.8	-0.3	-0.6	1.1	0.1	-1.4
<b>Unemployment Rate (%)</b>	<b>7.8</b>	<b>5.7</b>	<b>6.0</b>	<b>6.5</b>	<b>5.0</b>	<b>6.4</b>
Q2:14	7.8	5.8	6.3	6.2	5.2	6.7
Q3:13	8.5	6.4	7.5	7.3	5.5	6.5
<b>Real Personal Income (\$Bil)</b>	<b>46.3</b>	<b>303.2</b>	<b>363.7</b>	<b>164.6</b>	<b>380.4</b>	<b>62.5</b>
Q/Q Percent Change	0.2	0.4	1.0	0.5	0.3	0.4
Y/Y Percent Change	1.8	2.0	2.4	2.7	1.1	1.7
<b>Building Permits</b>	<b>2,095</b>	<b>5,209</b>	<b>14,278</b>	<b>7,027</b>	<b>7,346</b>	<b>651</b>
Q/Q Percent Change	996.9	32.7	15.2	5.0	-5.0	26.7
Y/Y Percent Change	93.6	4.4	18.8	12.4	-8.9	5.5
<b>House Price Index (1980=100)</b>	<b>703.1</b>	<b>427.0</b>	<b>314.6</b>	<b>317.5</b>	<b>413.3</b>	<b>225.2</b>
Q/Q Percent Change	0.8	0.8	1.2	0.9	0.5	1.2
Y/Y Percent Change	8.0	3.5	3.5	3.9	3.3	2.2

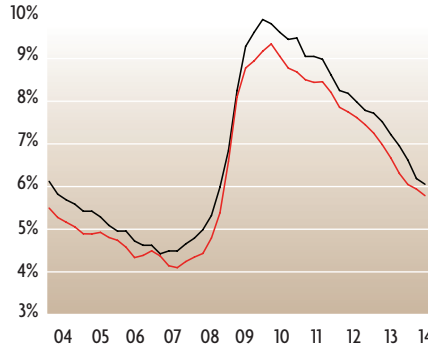
### Nonfarm Employment

Change From Prior Year  
Third Quarter 2003 - Third Quarter 2014



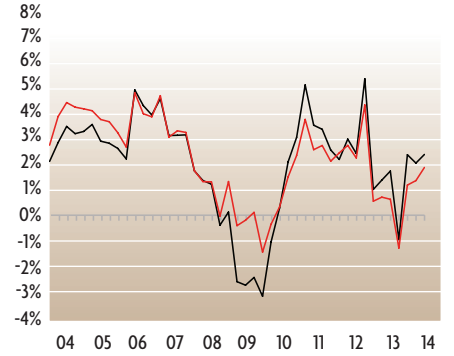
### Unemployment Rate

Third Quarter 2003 - Third Quarter 2014



### Real Personal Income

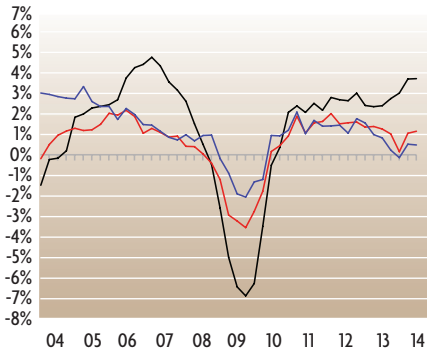
Change From Prior Year  
Third Quarter 2003 - Third Quarter 2014



— Fifth District — United States

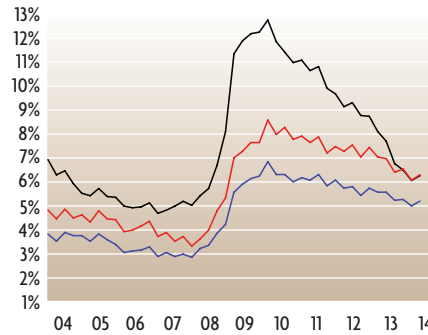
### Nonfarm Employment Major Metro Areas

Change From Prior Year  
Third Quarter 2003 - Third Quarter 2014



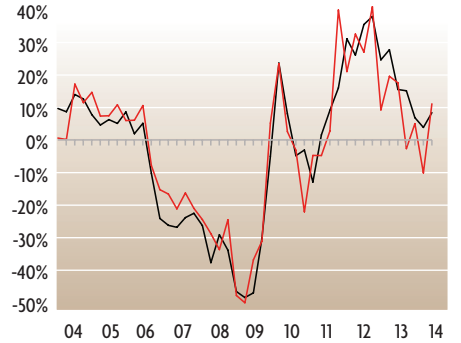
### Unemployment Rate Major Metro Areas

Change From Prior Year  
Third Quarter 2003 - Third Quarter 2014



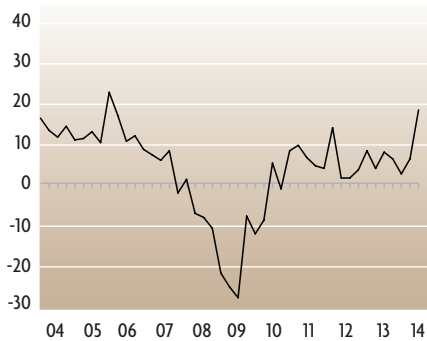
### Building Permits

Change From Prior Year  
Third Quarter 2003 - Third Quarter 2014



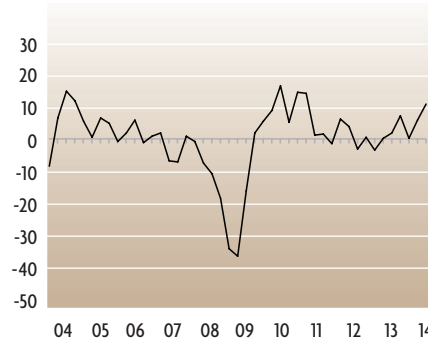
### FRB—Richmond Services Revenues Index

Third Quarter 2003 - Third Quarter 2014



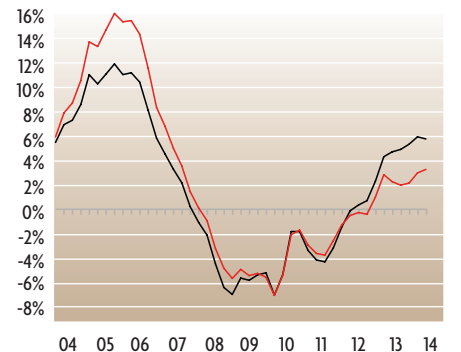
### FRB—Richmond Manufacturing Composite Index

Third Quarter 2003 - Third Quarter 2014



### House Prices

Change From Prior Year  
Third Quarter 2003 - Third Quarter 2014



— Fifth District — United States

**NOTES:**

- 1) FRB-Richmond survey indexes are diffusion indexes representing the percentage of responding firms reporting increase minus the percentage reporting decrease. The manufacturing composite index is a weighted average of the shipments, new orders, and employment indexes.
- 2) Building permits and house prices are not seasonally adjusted; all other series are seasonally adjusted.

**SOURCES:**

Real Personal Income: Bureau of Economic Analysis/Haver Analytics.  
 Unemployment Rate: LAUS Program, Bureau of Labor Statistics, U.S. Department of Labor, <http://stats.bls.gov>.  
 Employment: CES Survey, Bureau of Labor Statistics, U.S. Department of Labor, <http://stats.bls.gov>.  
 Building Permits: U.S. Census Bureau, <http://www.census.gov>.  
 House Prices: Federal Housing Finance Agency, <http://www.fhfa.gov>.

For more information, contact Jamie Feik at (804)-697-8927 or e-mail [Jamie.Feik@rich.frb.org](mailto:Jamie.Feik@rich.frb.org)

# METROPOLITAN AREA DATA, Q3:14

	Washington, DC	Baltimore, MD	Hagerstown-Martinsburg, MD-WV
<b>Nonfarm Employment (000s)</b>	<b>2,536.3</b>	<b>1,347.2</b>	<b>103.1</b>
Q/Q Percent Change	-0.2	-0.3	0.1
Y/Y Percent Change	0.5	1.2	0.3
<b>Unemployment Rate (%)</b>	<b>5.1</b>	<b>6.1</b>	<b>6.0</b>
Q2:14	5.1	6.2	6.2
Q3:13	5.4	6.8	6.6
<b>Building Permits</b>	<b>7,223</b>	<b>2,189</b>	<b>282</b>
Q/Q Percent Change	35.3	26.8	36.2
Y/Y Percent Change	25.6	-8.9	8.9

	Asheville, NC	Charlotte, NC	Durham, NC
<b>Nonfarm Employment (000s)</b>	<b>176.9</b>	<b>1,060.8</b>	<b>290.8</b>
Q/Q Percent Change	-0.4	-0.5	-0.2
Y/Y Percent Change	1.5	3.8	2.9
<b>Unemployment Rate (%)</b>	<b>4.9</b>	<b>6.0</b>	<b>5.0</b>
Q2:14	4.9	6.2	5.0
Q3:13	6.0	7.6	5.9
<b>Building Permits</b>	<b>373.0</b>	<b>5,176</b>	<b>884</b>
Q/Q Percent Change	-6.0	44.1	8.3
Y/Y Percent Change	-10.8	77.8	-33.5

	Greensboro-High Point, NC	Raleigh, NC	Wilmington, NC
<b>Nonfarm Employment (000s)</b>	<b>346.2</b>	<b>562.5</b>	<b>116.6</b>
Q/Q Percent Change	-0.8	0.9	0.5
Y/Y Percent Change	0.9	3.6	3.4
<b>Unemployment Rate (%)</b>	<b>6.5</b>	<b>4.9</b>	<b>6.0</b>
Q2:14	6.7	5.0	6.2
Q3:13	8.1	6.0	7.5
<b>Building Permits</b>	<b>586</b>	<b>3,199</b>	<b>640</b>
Q/Q Percent Change	5.4	8.6	1.7
Y/Y Percent Change	-12.0	37.2	-30.3

	Winston-Salem, NC	Charleston, SC	Columbia, SC
<b>Nonfarm Employment (000s)</b>	<b>251.9</b>	<b>322.9</b>	<b>372.1</b>
Q/Q Percent Change	-0.6	-0.2	-0.4
Y/Y Percent Change	1.6	3.0	2.6
<b>Unemployment Rate (%)</b>	<b>5.9</b>	<b>5.7</b>	<b>6.1</b>
Q2:14	6.1	5.3	5.6
Q3:13	7.4	6.2	6.6
<b>Building Permits</b>	<b>688</b>	<b>1,264</b>	<b>1,330</b>
Q/Q Percent Change	25.5	-1.4	29.4
Y/Y Percent Change	14.5	-1.8	46.2
	Greenville, SC	Richmond, VA	Roanoke, VA
<b>Nonfarm Employment (000s)</b>	<b>387.3</b>	<b>631.5</b>	<b>160.0</b>
Q/Q Percent Change	-0.6	-0.2	-0.5
Y/Y Percent Change	1.9	1.5	0.7
<b>Unemployment Rate (%)</b>	<b>6.0</b>	<b>5.4</b>	<b>5.2</b>
Q2:14	5.5	5.6	5.3
Q3:13	6.6	5.9	5.7
<b>Building Permits</b>	<b>1,044</b>	<b>1,252</b>	<b>116</b>
Q/Q Percent Change	-28.3	-12.4	-16.5
Y/Y Percent Change	30.2	-22.7	6.4
	Virginia Beach-Norfolk, VA	Charleston, WV	Huntington, WV
<b>Nonfarm Employment (000s)</b>	<b>759.0</b>	<b>123.9</b>	<b>140.0</b>
Q/Q Percent Change	0.2	-0.5	-0.8
Y/Y Percent Change	0.1	-0.2	0.5
<b>Unemployment Rate (%)</b>	<b>5.6</b>	<b>6.3</b>	<b>6.4</b>
Q2:14	5.8	6.5	6.7
Q3:13	6.1	6.2	7.3
<b>Building Permits</b>	<b>1,242</b>	<b>6</b>	<b>34</b>
Q/Q Percent Change	-22.2	20.0	-8.1
Y/Y Percent Change	-50.3	-88.2	78.9

For more information, contact Jamie Feik at (804) 697-8927 or e-mail [Jamie.Feik@rich.frb.org](mailto:Jamie.Feik@rich.frb.org)