

STATE DATA, Q3:16

	DC	MD	NC	SC	VA	WV
Nonfarm Employment (000s)	781.0	2,714.0	4,354.5	2,061.6	3,922.3	744.6
Q/Q Percent Change	-0.1	0.4	0.6	0.6	0.3	-0.5
Y/Y Percent Change	1.4	1.3	2.5	2.4	1.1	-1.5
Manufacturing Employment (000s)	1.2	103.3	464.5	238.5	232.5	46.6
Q/Q Percent Change	0.0	-0.6	0.0	0.3	0.2	-0.5
Y/Y Percent Change	9.1	-1.5	0.5	0.9	-0.8	-2.0
Professional/Business Services Employment (000s)	165.3	443.2	608.0	269.5	718.0	65.5
Q/Q Percent Change	0.2	0.7	0.6	0.1	0.5	-0.4
Y/Y Percent Change	1.9	2.5	2.8	1.8	1.7	-2.2
Government Employment (000s)	238.4	505.0	730.4	365.3	714.8	155.1
Q/Q Percent Change	-0.6	0.2	0.7	0.7	0.1	-0.9
Y/Y Percent Change	0.1	0.4	1.4	1.3	0.4	0.7
Civilian Labor Force (000s)	392.2	3,171.3	4,876.0	2,297.3	4,242.6	783.0
Q/Q Percent Change	-0.1	0.3	0.5	0.0	0.5	0.1
Y/Y Percent Change	1.2	0.7	1.9	1.1	0.8	-0.2
Unemployment Rate (%)	6.0	4.2	5.0	4.6	4.1	6.0
Q2:16	6.1	4.3	5.0	5.1	4.0	6.0
Q3:15	6.7	4.9	5.7	5.6	4.2	6.7
Real Personal Income (\$Bil)	46.7	316.3	386.6	177.7	409.7	61.9
Q/Q Percent Change	0.8	0.8	0.7	0.8	0.7	0.4
Y/Y Percent Change	3.3	2.9	3.0	3.3	2.4	-0.1
Building Permits	1,609	3,274	16,408	8,617	8,035	702
Q/Q Percent Change	0.0	-41.5	8.6	-2.4	-3.0	-9.9
Y/Y Percent Change	0.0	-26.8	24.8	2.0	-8.7	-13.0
House Price Index (1980=100)	796.5	450.7	345.5	352.2	436.9	230.8
Q/Q Percent Change	0.3	1.1	2.1	1.8	0.8	0.6
Y/Y Percent Change	6.0	3.6	6.2	6.4	3.4	2.0

NOTES:

- 1) FRB-Richmond survey indexes are diffusion indexes representing the percentage of responding firms reporting increase minus the percentage reporting decrease. The manufacturing composite index is a weighted average of the shipments, new orders, and employment indexes.
- 2) Building permits and house prices are not seasonally adjusted; all other series are seasonally adjusted.
- 3) Manufacturing employment for DC is not seasonally adjusted

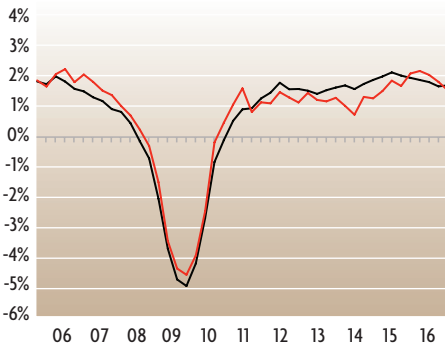
SOURCES:

Real Personal Income: Bureau of Economic Analysis/Haver Analytics.
 Unemployment Rate: LAUS Program, Bureau of Labor Statistics, U.S. Department of Labor/Haver Analytics
 Employment: CES Survey, Bureau of Labor Statistics, U.S. Department of Labor/Haver Analytics
 Building Permits: U.S. Census Bureau/Haver Analytics
 House Prices: Federal Housing Finance Agency/Haver Analytics

For more information, contact Michael Stanley at (804) 697-8437 or e-mail michael.stanley@rich.frb.org

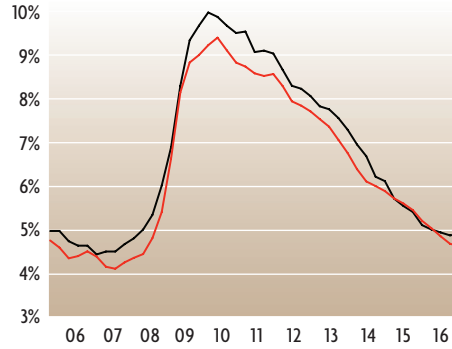
Nonfarm Employment

Change From Prior Year
Third Quarter 2005 - Third Quarter 2016



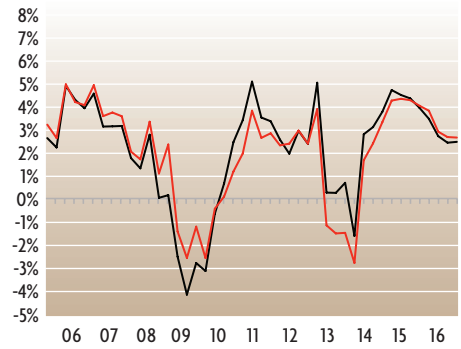
Unemployment Rate

Third Quarter 2005 - Third Quarter 2016



Real Personal Income

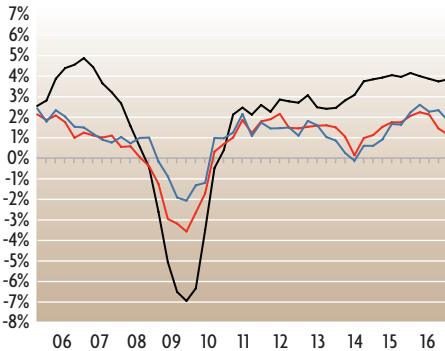
Change From Prior Year
Third Quarter 2005 - Third Quarter 2016



— Fifth District — United States

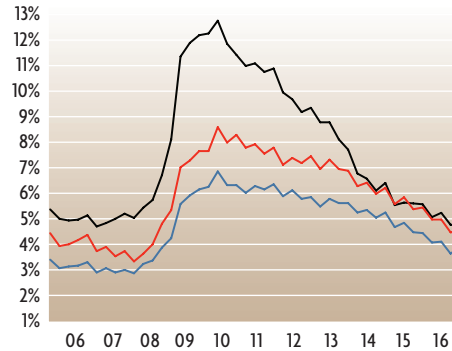
Nonfarm Employment Major Metro Areas

Change From Prior Year
Third Quarter 2005 - Third Quarter 2016



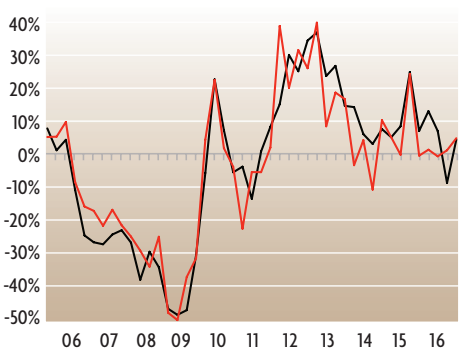
Unemployment Rate Major Metro Areas

Third Quarter 2005 - Third Quarter 2016



Building Permits

Change From Prior Year
Third Quarter 2005 - Third Quarter 2016



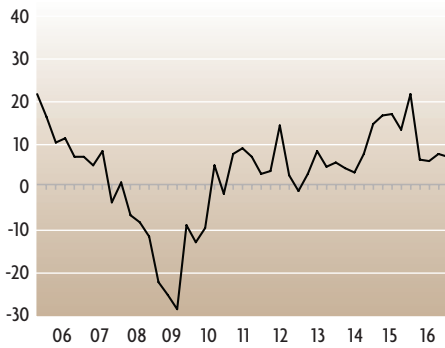
— Charlotte — Baltimore — Washington

— Charlotte — Baltimore — Washington

— Fifth District — United States

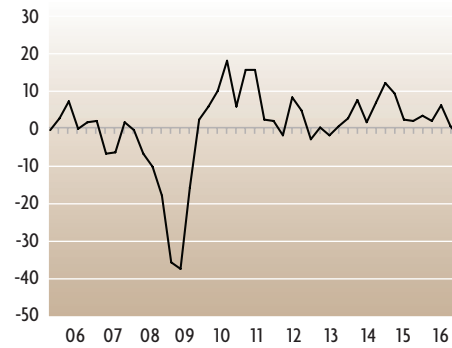
FRB—Richmond Services Revenues Index

Third Quarter 2005 - Third Quarter 2016



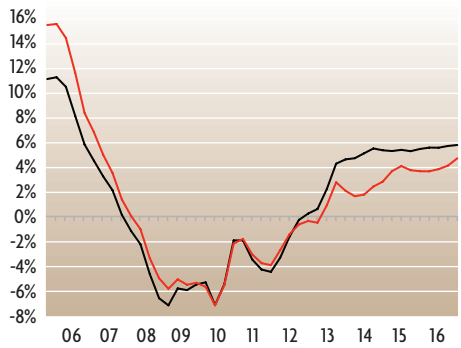
FRB—Richmond Manufacturing Composite Index

Third Quarter 2005 - Third Quarter 2016



House Prices

Change From Prior Year
Third Quarter 2005 - Third Quarter 2016



— Fifth District — United States

METROPOLITAN AREA DATA, Q3:16

	Washington, DC	Baltimore, MD	Hagerstown-Martinsburg, MD-WV
Nonfarm Employment (000s)	2,641.1	1,398.4	106.7
Q/Q Percent Change	-0.1	-0.2	-0.6
Y/Y Percent Change	1.8	1.1	0.7
Unemployment Rate (%)	3.9	4.4	4.6
Q2:16	3.7	4.6	4.5
Q3:15	4.3	5.2	5.4
Building Permits	6,323	1,290	238
Q/Q Percent Change	-18.3	-38.2	-5.9
Y/Y Percent Change	4.0	-36.5	1.7
	Asheville, NC	Charlotte, NC	Durham, NC
Nonfarm Employment (000s)	187.5	1,147.2	301.8
Q/Q Percent Change	-0.3	-0.1	-0.4
Y/Y Percent Change	3.5	3.8	3.2
Unemployment Rate (%)	3.9	4.6	4.1
Q2:16	4.0	4.8	4.5
Q3:15	4.6	5.4	5.0
Building Permits	494	6,497	1,086
Q/Q Percent Change	-18.8	45.7	3.9
Y/Y Percent Change	-3.5	43.8	-7.4
	Greensboro-High Point, NC	Raleigh, NC	Wilmington, NC
Nonfarm Employment (000s)	355.8	604.0	124.6
Q/Q Percent Change	-0.6	0.6	0.0
Y/Y Percent Change	0.9	3.7	2.8
Unemployment Rate (%)	4.8	4.0	4.6
Q2:16	5.1	4.3	4.8
Q3:15	5.9	4.7	5.5
Building Permits	758	3,965	320
Q/Q Percent Change	-25.5	-5.6	-37.1
Y/Y Percent Change	7.2	38.8	-29.4

NOTE:
Nonfarm employment and building permits are not seasonally adjusted. Unemployment rates are seasonally adjusted.

	Winston-Salem, NC	Charleston, SC	Columbia, SC
Nonfarm Employment (000s)	259.6	348.1	393.7
Q/Q Percent Change	-0.9	0.2	0.1
Y/Y Percent Change	1.5	3.7	2.3
Unemployment Rate (%)	4.5	4.3	4.7
Q2:16	4.8	4.7	5.0
Q3:15	5.5	4.8	5.2
Building Permits	372	1,864	1,184
Q/Q Percent Change	-41.4	-7.4	-3.9
Y/Y Percent Change	46.5	-4.8	-10.8
	Greenville, SC	Richmond, VA	Roanoke, VA
Nonfarm Employment (000s)	408.5	665.1	161.7
Q/Q Percent Change	-0.4	-0.1	-0.7
Y/Y Percent Change	1.5	1.7	0.9
Unemployment Rate (%)	4.6	4.0	3.8
Q2:16	4.8	3.8	3.6
Q3:15	5.0	4.4	4.2
Building Permits	1,640	1,265	N/A
Q/Q Percent Change	13.3	-9.8	N/A
Y/Y Percent Change	-4.4	-13.1	N/A
	Virginia Beach-Norfolk, VA	Charleston, WV	Huntington, WV
Nonfarm Employment (000s)	778.1	118.4	136.9
Q/Q Percent Change	0.3	-1.4	-1.1
Y/Y Percent Change	0.5	-1.9	-0.5
Unemployment Rate (%)	4.5	5.6	6.0
Q2:16	4.4	5.7	6.1
Q3:15	4.7	6.4	6.2
Building Permits	2,212	66	30
Q/Q Percent Change	16.0	8.2	-33.3
Y/Y Percent Change	21.1	6.5	-41.2

For more information, contact Michael Stanley at (804) 697-8437 or e-mail michael.stanley@rich.frb.org