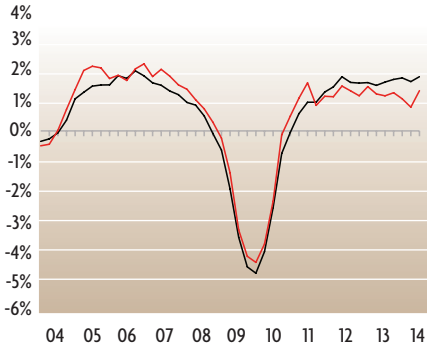


STATE DATA, Q2:14

	DC	MD	NC	SC	VA	WV
Nonfarm Employment (000s)	752.2	2,617.8	4,133.3	1,944.5	3,775.1	766.1
Q/Q Percent Change	0.3	0.6	0.9	0.8	0.5	0.7
Y/Y Percent Change	0.7	1.0	2.2	2.7	0.5	0.0
Manufacturing Employment (000s)	1.0	103.6	447.4	230.1	231.8	47.9
Q/Q Percent Change	0.0	-0.2	0.4	1.4	0.2	0.0
Y/Y Percent Change	0.0	-2.4	1.0	2.6	0.5	-0.9
Professional/Business Services Employment (000s)	157.1	424.0	569.4	254.8	680.1	66.3
Q/Q Percent Change	0.8	1.1	2.3	3.6	0.9	1.9
Y/Y Percent Change	1.2	2.0	4.5	5.7	-0.1	2.3
Government Employment (000s)	235.0	504.0	716.5	355.7	705.4	156.1
Q/Q Percent Change	-0.2	0.3	0.3	0.4	0.2	2.8
Y/Y Percent Change	-2.7	-0.2	0.3	0.5	-0.7	1.5
Civilian Labor Force (000s)	374.1	3,101.5	4,631.3	2,179.7	4,241.7	790.7
Q/Q Percent Change	0.6	0.0	-0.1	0.4	-0.1	-0.5
Y/Y Percent Change	0.1	-0.6	-0.7	0.3	0.4	-0.9
Unemployment Rate (%)	7.8	5.8	6.3	6.2	5.2	6.7
Q1:14	7.8	6.0	6.5	6.2	5.3	6.8
Q2:13	8.6	6.6	8.1	7.8	5.6	6.6
Real Personal Income (\$Bil)	46.3	302.3	360.3	163.7	379.5	62.2
Q/Q Percent Change	0.7	0.8	0.6	1.4	0.5	1.0
Y/Y Percent Change	1.7	1.4	1.6	3.0	0.7	1.0
Building Permits	191	3,926	12,392	6,693	7,729	514
Q/Q Percent Change	-84.3	8.9	12.4	-3.5	23.0	36.3
Y/Y Percent Change	-78.2	-22.9	-9.6	6.9	-6.4	-34.6
House Price Index (1980=100)	698.7	424.7	311.4	314.4	411.8	222.8
Q/Q Percent Change	3.2	1.8	1.6	2.1	2.1	0.9
Y/Y Percent Change	11.4	3.5	3.0	3.0	3.1	2.7

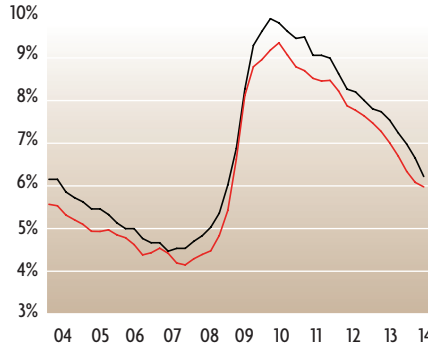
Nonfarm Employment

Change From Prior Year
Second Quarter 2003 - Second Quarter 2014



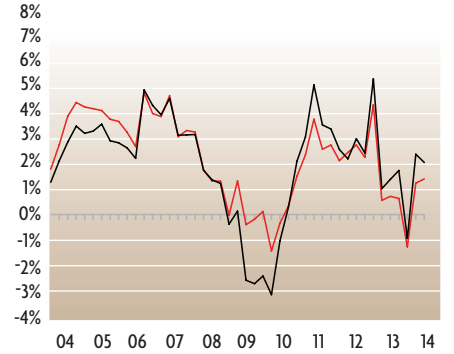
Unemployment Rate

Second Quarter 2003 - Second Quarter 2014



Real Personal Income

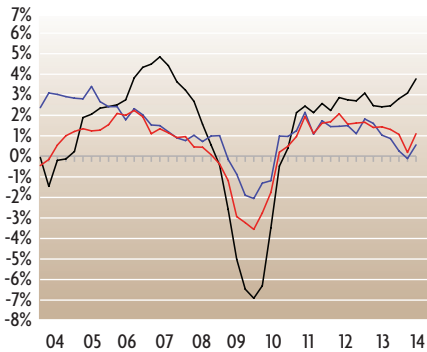
Change From Prior Year
Second Quarter 2003 - Second Quarter 2014



— Fifth District — United States

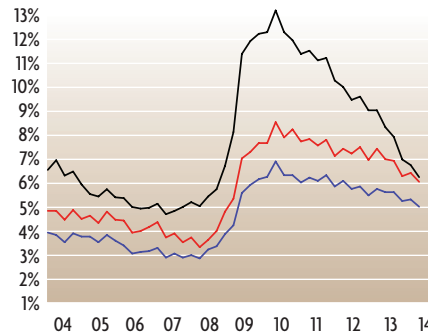
Nonfarm Employment Major Metro Areas

Change From Prior Year
Second Quarter 2003 - Second Quarter 2014



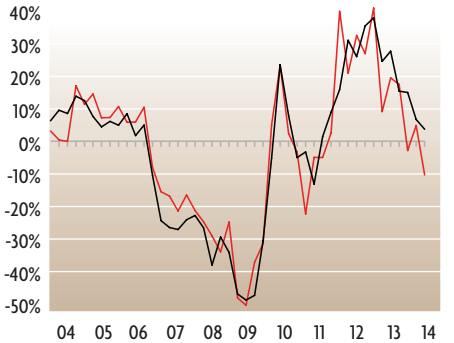
Unemployment Rate Major Metro Areas

Change From Prior Year
Second Quarter 2003 - Second Quarter 2014



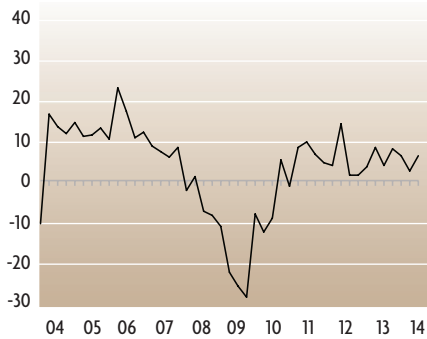
Building Permits

Change From Prior Year
Second Quarter 2003 - Second Quarter 2014



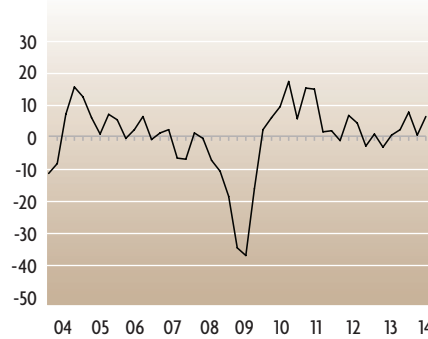
FRB—Richmond Services Revenues Index

Second Quarter 2003 - Second Quarter 2014



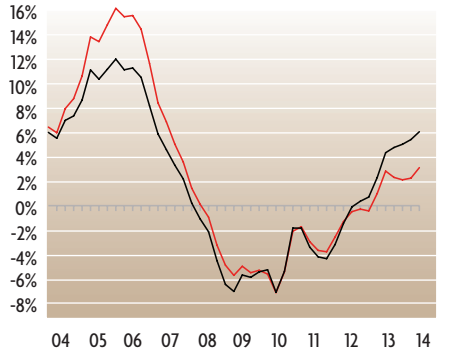
FRB—Richmond Manufacturing Composite Index

Second Quarter 2003 - Second Quarter 2014



House Prices

Change From Prior Year
Second Quarter 2003 - Second Quarter 2014



— Fifth District — United States

NOTES:
1) FRB-Richmond survey indexes are diffusion indexes representing the percentage of responding firms reporting increase minus the percentage reporting decrease. The manufacturing composite index is a weighted average of the shipments, new orders, and employment indexes.
2) Building permits and house prices are not seasonally adjusted; all other series are seasonally adjusted.

SOURCES:
Real Personal Income: Bureau of Economic Analysis/Haver Analytics.
Unemployment Rate: LAUS Program, Bureau of Labor Statistics, U.S. Department of Labor, <http://stats.bls.gov>.
Employment: CES Survey, Bureau of Labor Statistics, U.S. Department of Labor, <http://stats.bls.gov>.
Building Permits: U.S. Census Bureau, <http://www.census.gov>.
House Prices: Federal Housing Finance Agency, <http://www.fhfa.gov>.

For more information, contact Jamie Feik at (804)-697-8927 or e-mail Jamie.Feik@rich.frb.org

METROPOLITAN AREA DATA, Q2:14

	Washington, DC	Baltimore, MD	Hagerstown-Martinsburg, MD-WV
Nonfarm Employment (000s)	2,541.1	1,351.3	103.0
Q/Q Percent Change	1.9	2.9	1.2
Y/Y Percent Change	0.6	1.1	0.2
Unemployment Rate (%)	4.9	6.0	6.5
Q1:14	4.8	6.0	6.4
Q2:13	5.5	7.0	7.2
Building Permits	5,340	1,727	207
Q/Q Percent Change	-19.2	42.8	33.5
Y/Y Percent Change	-21.8	-17.1	-16.5
	Asheville, NC	Charlotte, NC	Durham, NC
Nonfarm Employment (000s)	177.5	1,065.9	291.4
Q/Q Percent Change	2.7	2.2	1.6
Y/Y Percent Change	1.4	3.7	2.5
Unemployment Rate (%)	4.9	6.3	5.0
Q1:14	4.8	6.5	5.0
Q2:13	6.5	8.4	6.4
Building Permits	397	3,591	816
Q/Q Percent Change	36.4	-1.8	29.1
Y/Y Percent Change	-7.0	-0.2	-19.3
	Greensboro-High Point, NC	Raleigh, NC	Wilmington, NC
Nonfarm Employment (000s)	348.8	557.6	116.0
Q/Q Percent Change	1.6	2.3	3.7
Y/Y Percent Change	0.9	3.9	3.1
Unemployment Rate (%)	6.7	5.2	6.6
Q1:14	6.8	5.2	6.6
Q2:13	8.7	6.6	8.6
Building Permits	556	2,947	629
Q/Q Percent Change	27.5	15.2	9.6
Y/Y Percent Change	0.2	-15.2	-31.8

	Winston-Salem, NC	Charleston, SC	Columbia, SC
Nonfarm Employment (000s)	253.4	323.5	373.6
Q/Q Percent Change	1.8	3.1	1.4
Y/Y Percent Change	1.5	3.4	2.9
Unemployment Rate (%)	6.0	4.7	5.0
Q1:14	6.1	5.1	5.4
Q2:13	7.7	6.5	6.9
Building Permits	548	1,282	1,028
Q/Q Percent Change	84.5	-40.1	9.1
Y/Y Percent Change	62.6	-0.2	-9.8
	Greenville, SC	Richmond, VA	Roanoke, VA
Nonfarm Employment (000s)	389.6	632.8	160.8
Q/Q Percent Change	2.1	2.2	1.8
Y/Y Percent Change	2.9	1.7	1.3
Unemployment Rate (%)	4.5	5.4	5.3
Q1:14	4.8	5.3	5.2
Q2:13	6.5	6.0	5.9
Building Permits	1,456	1,429	139
Q/Q Percent Change	57.9	82.0	117.2
Y/Y Percent Change	88.8	-3.8	-49.8
	Virginia Beach-Norfolk, VA	Charleston, WV	Huntington, WV
Nonfarm Employment (000s)	757.6	124.5	141.1
Q/Q Percent Change	2.4	2.2	2.2
Y/Y Percent Change	0.3	-0.5	0.5
Unemployment Rate (%)	5.6	5.9	6.3
Q1:14	5.5	5.7	6.5
Q2:13	6.1	6.0	7.1
Building Permits	1,596	5	37
Q/Q Percent Change	60.7	150.0	-14.0
Y/Y Percent Change	4.7	-89.4	184.6

For more information, contact Jamie Feik at (804) 697-8927 or e-mail Jamie.Feik@rich.frb.org