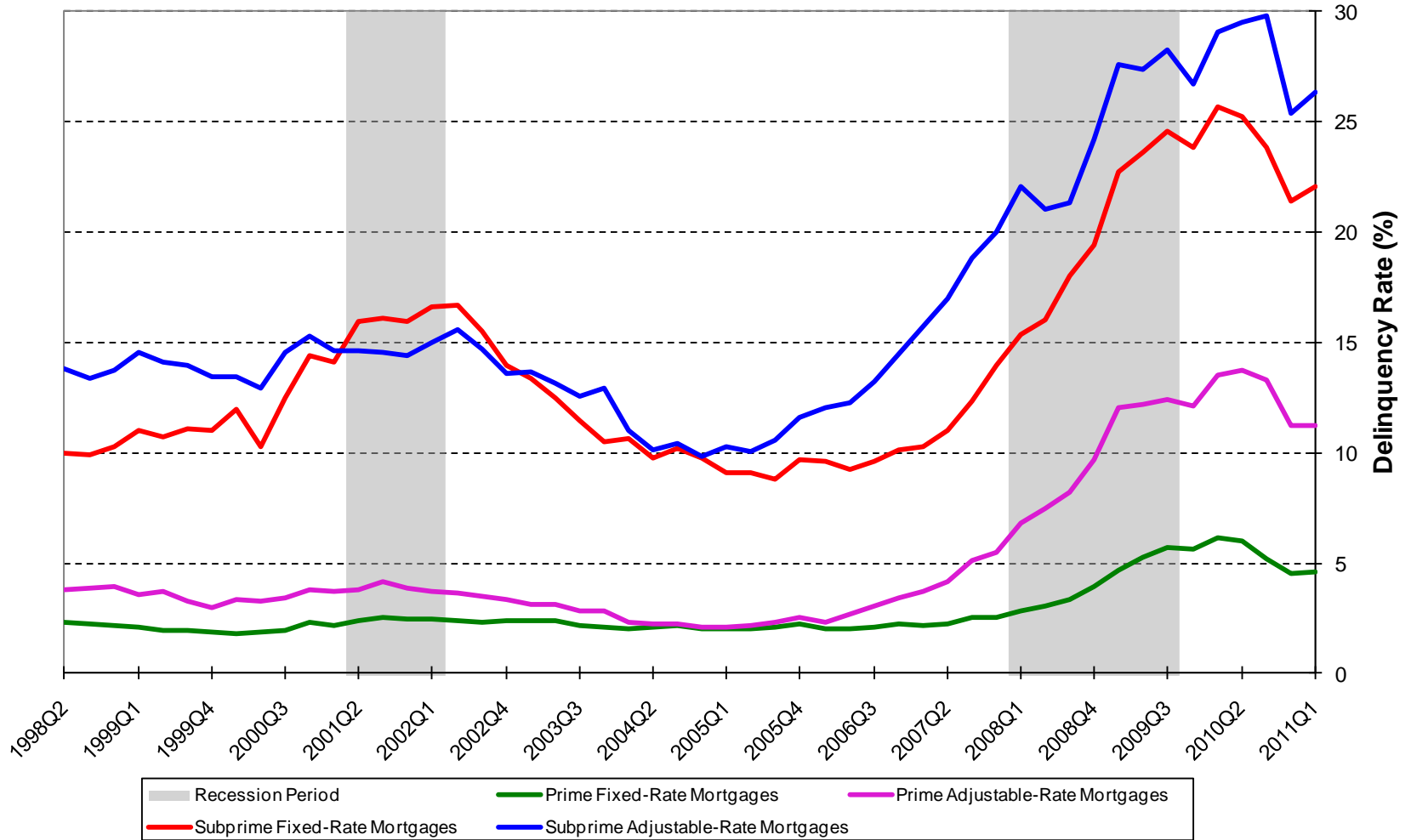


U.S. Residential Mortgage Delinquency Rates

Seasonally Adjusted Data, 1998Q2 to 2011Q1

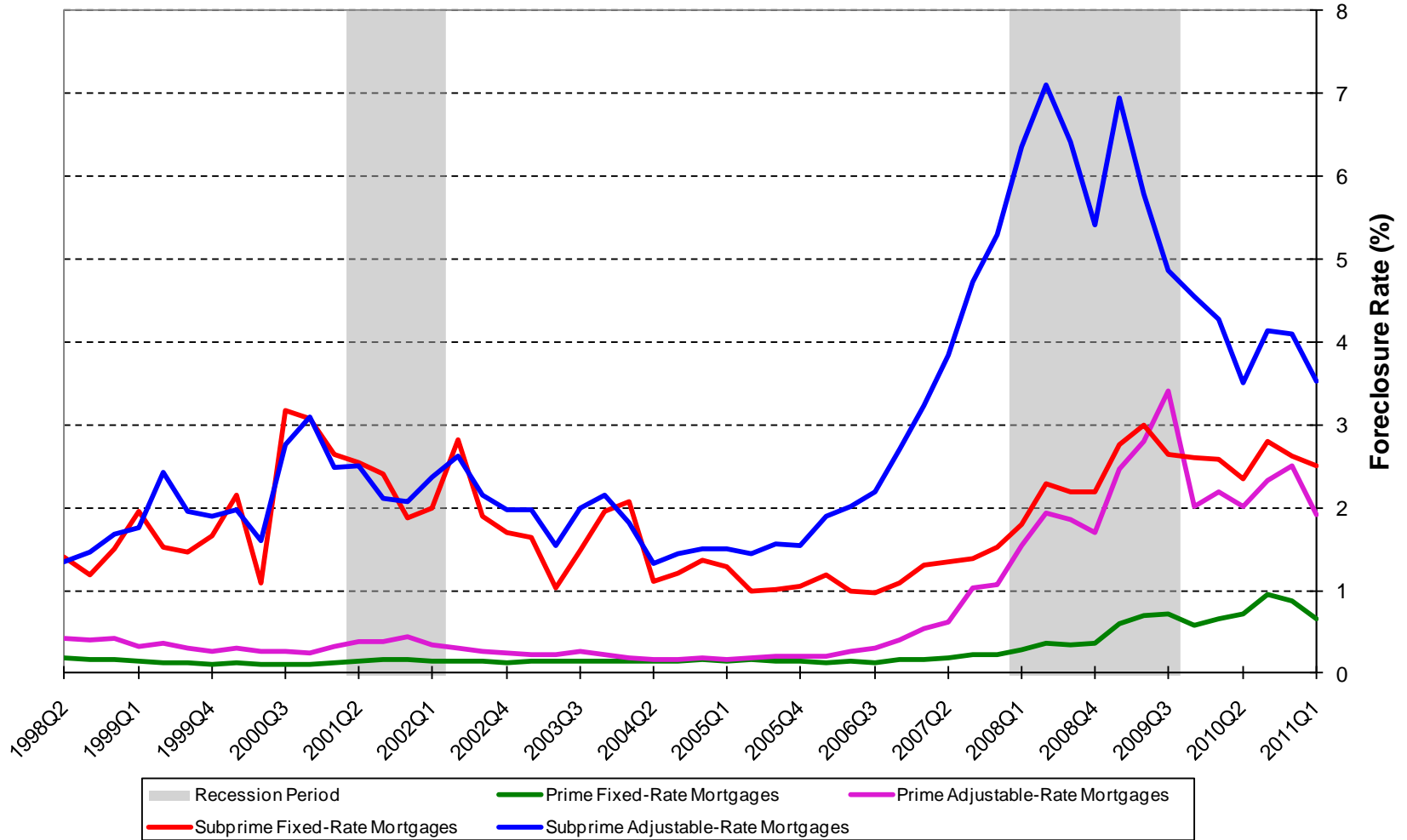
Source: Mortgage Bankers Association / Haver Analytics



U.S. Residential Mortgage Foreclosure Rates

Seasonally Adjusted Data, 1998Q2 to 2011Q1

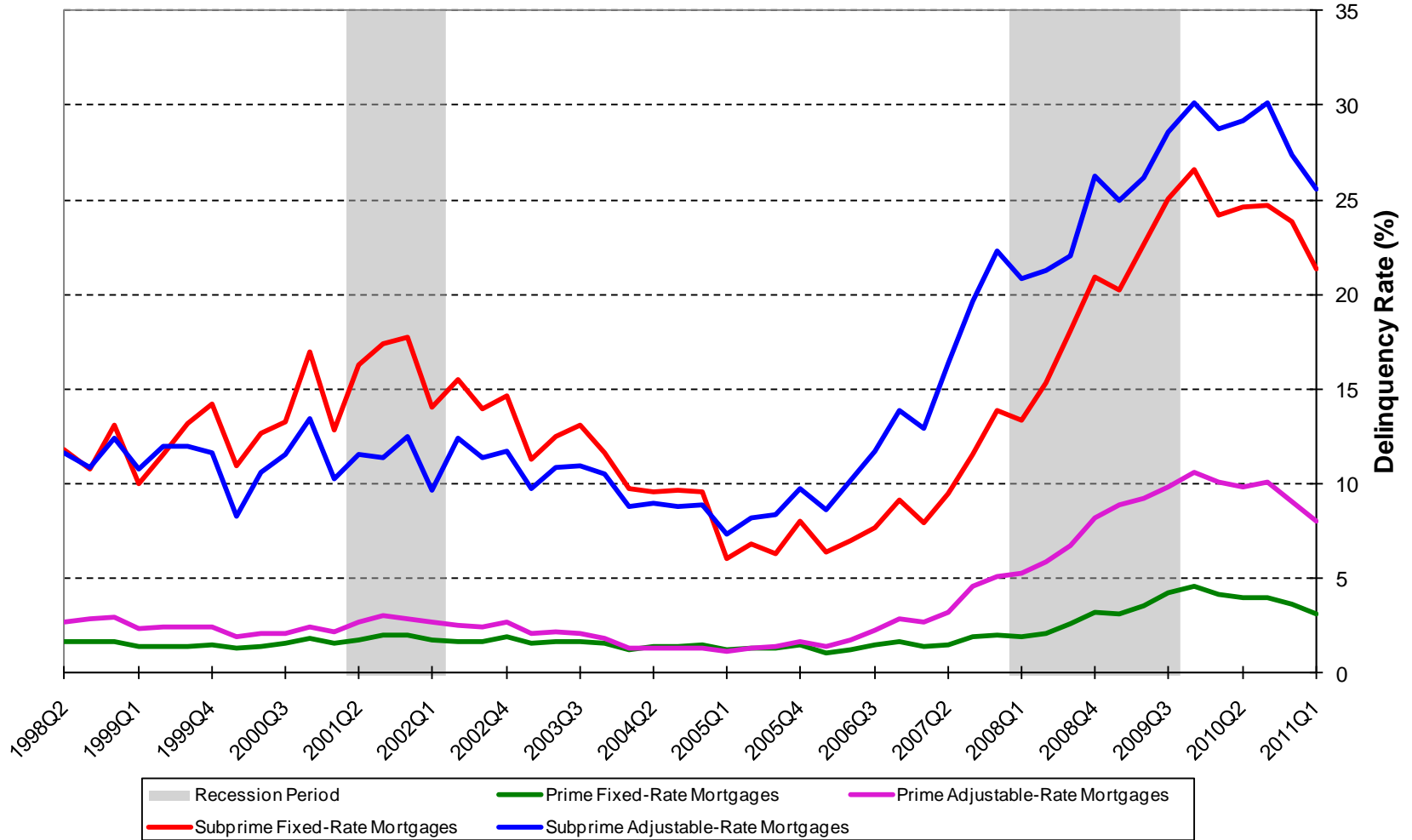
Source: Mortgage Bankers Association / Haver Analytics



Virginia Residential Mortgage Delinquency Rates

Not Seasonally Adjusted Data, 1998Q2 to 2011Q1

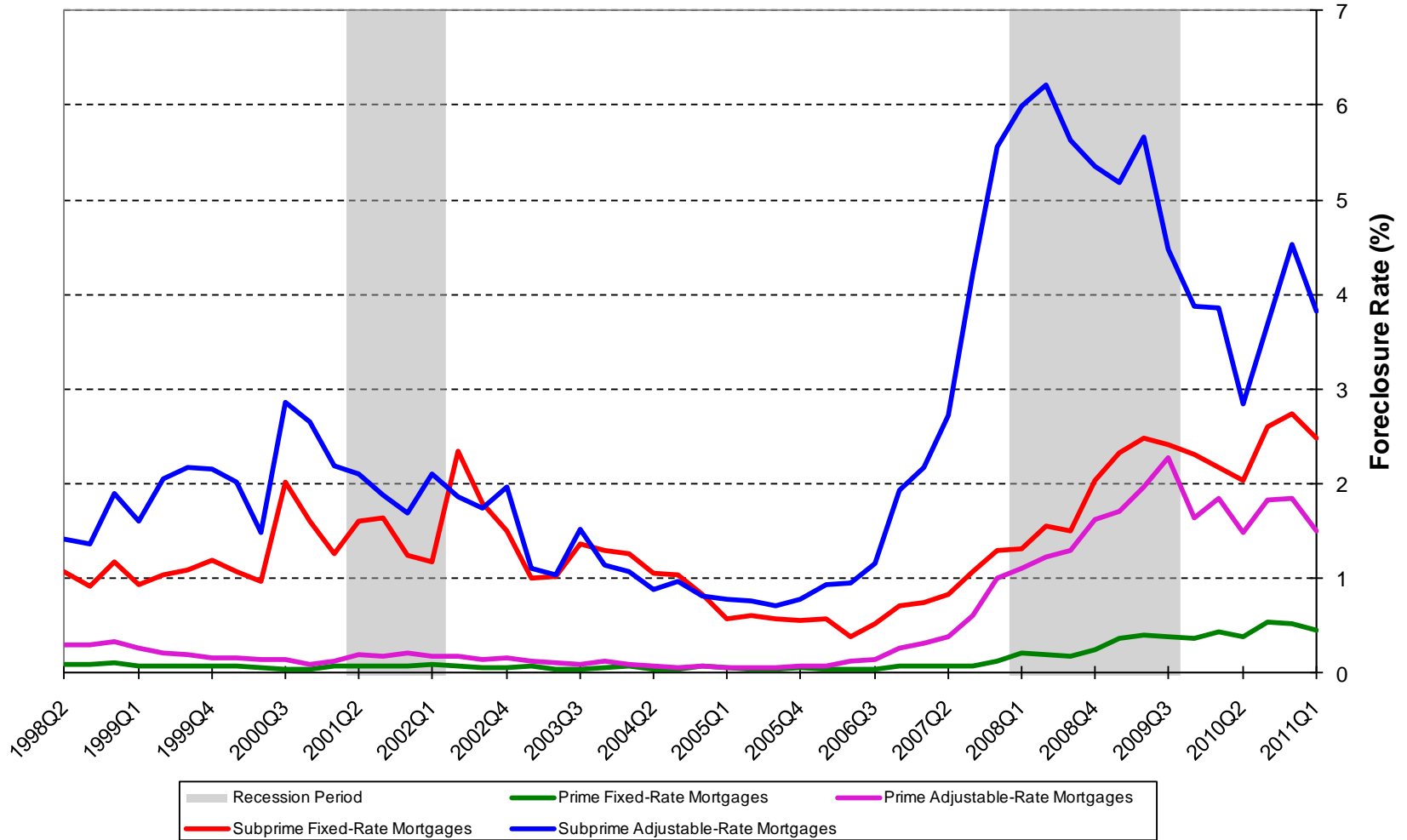
Source: Mortgage Bankers Association / Haver Analytics



Virginia Residential Mortgage Foreclosure Rates

Not Seasonally Adjusted Data, 1998Q2 to 2011Q1

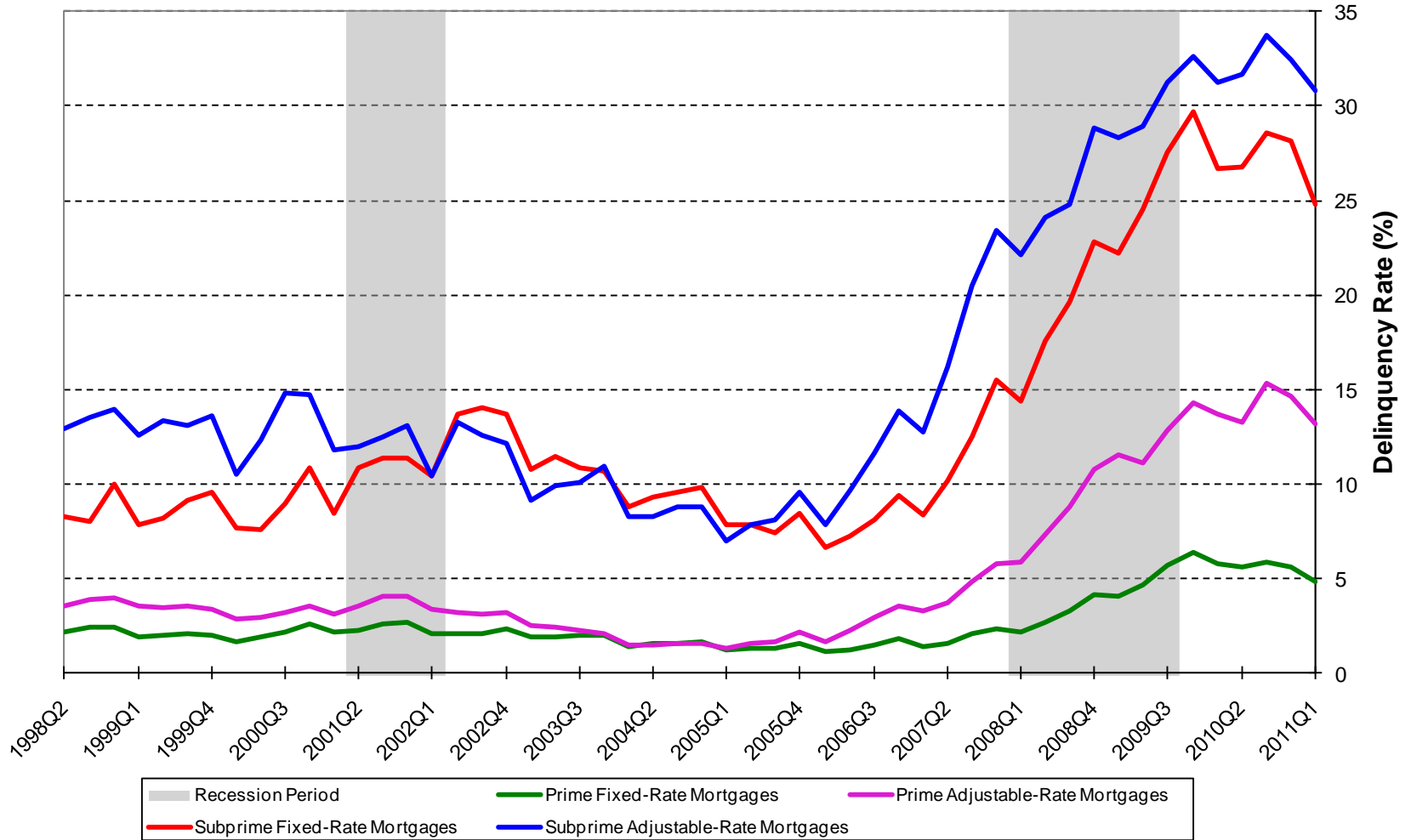
Source: Mortgage Bankers Association / Haver Analytics



Maryland Residential Mortgage Delinquency Rates

Not Seasonally Adjusted Data, 1998Q2 to 2011Q1

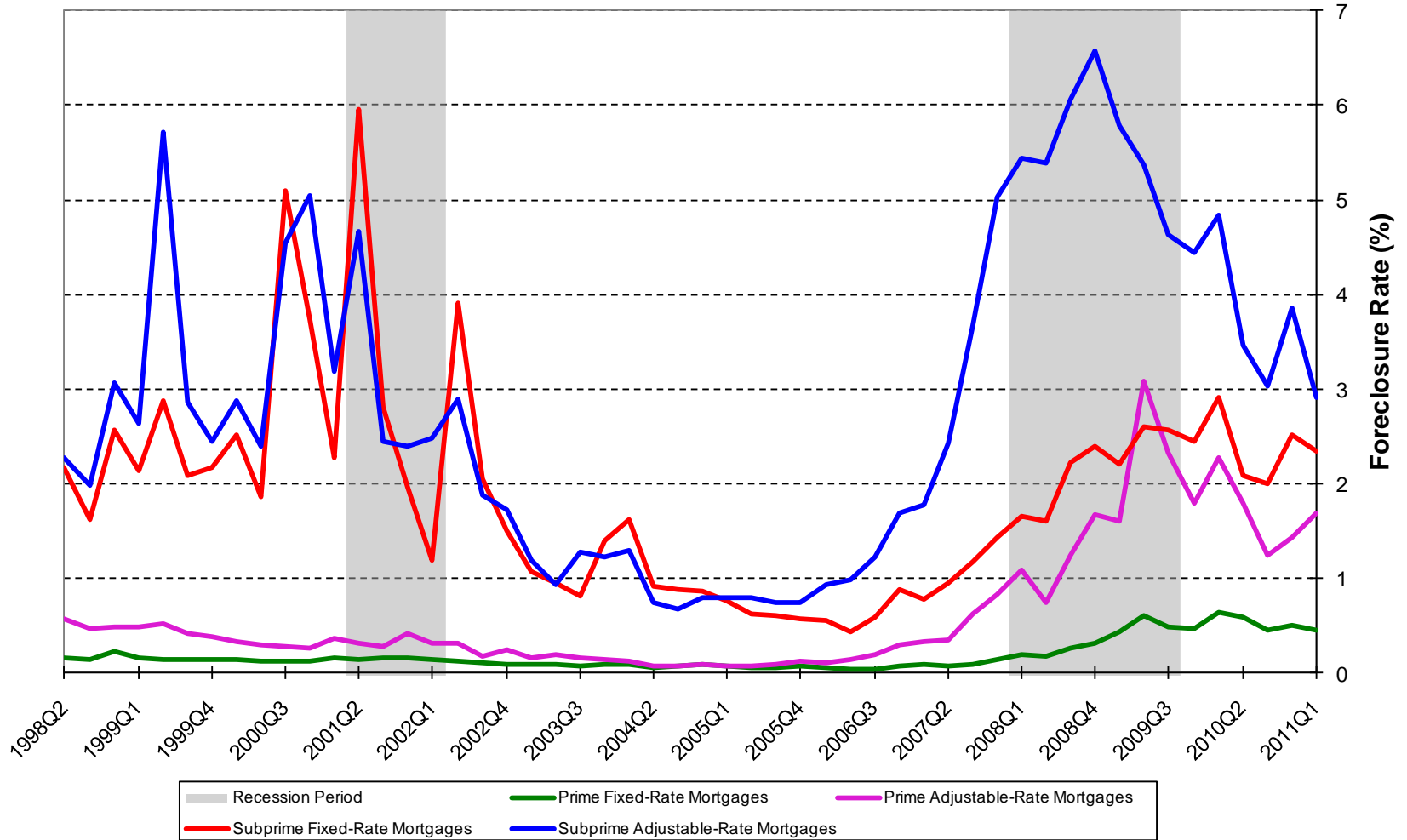
Source: Mortgage Bankers Association / Haver Analytics



Maryland Residential Mortgage Foreclosure Rates

Not Seasonally Adjusted Data, 1998Q2 to 2011Q1

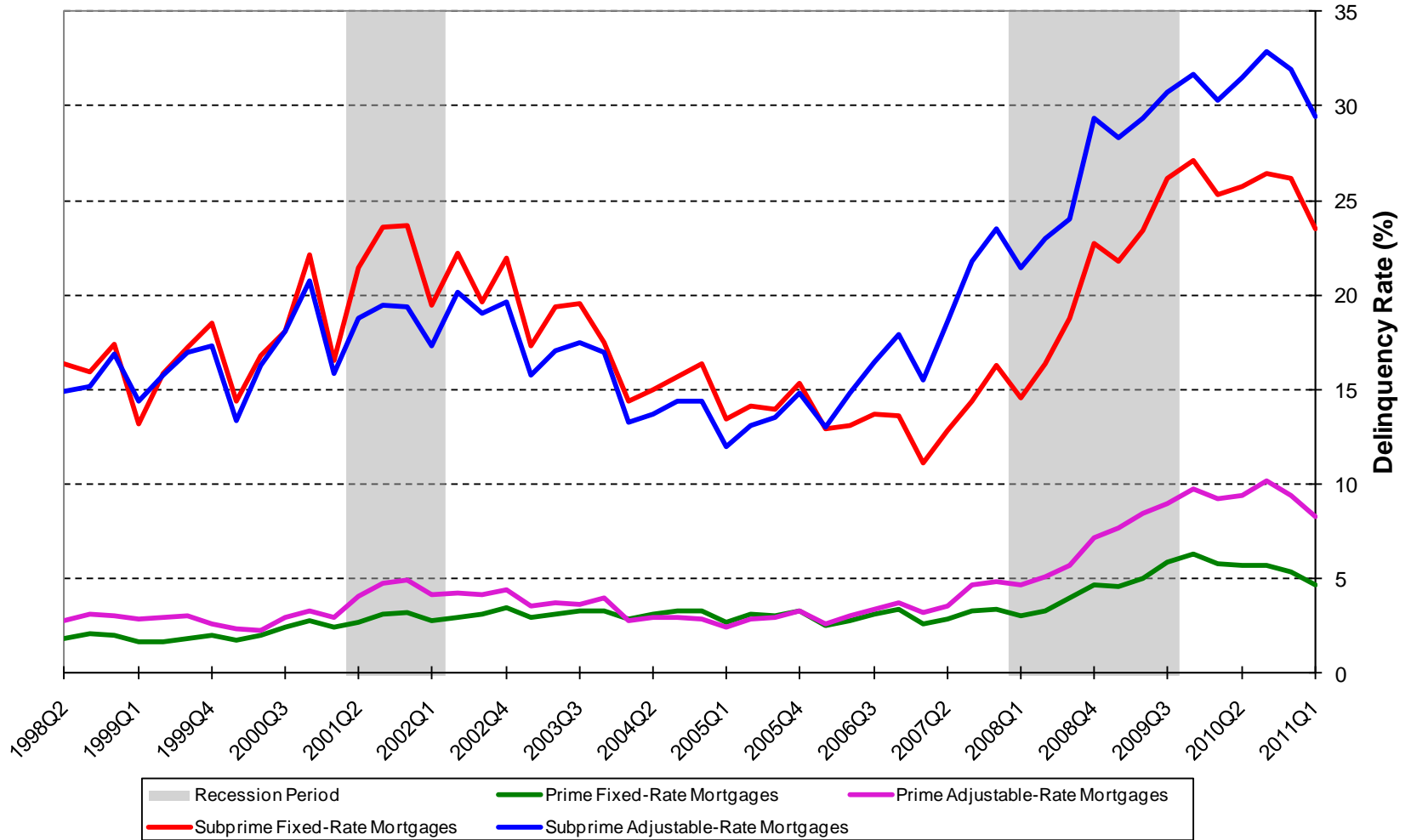
Source: Mortgage Bankers Association / Haver Analytics



North Carolina Residential Mortgage Delinquency Rates

Not Seasonally Adjusted Data, 1998Q2 to 2011Q1

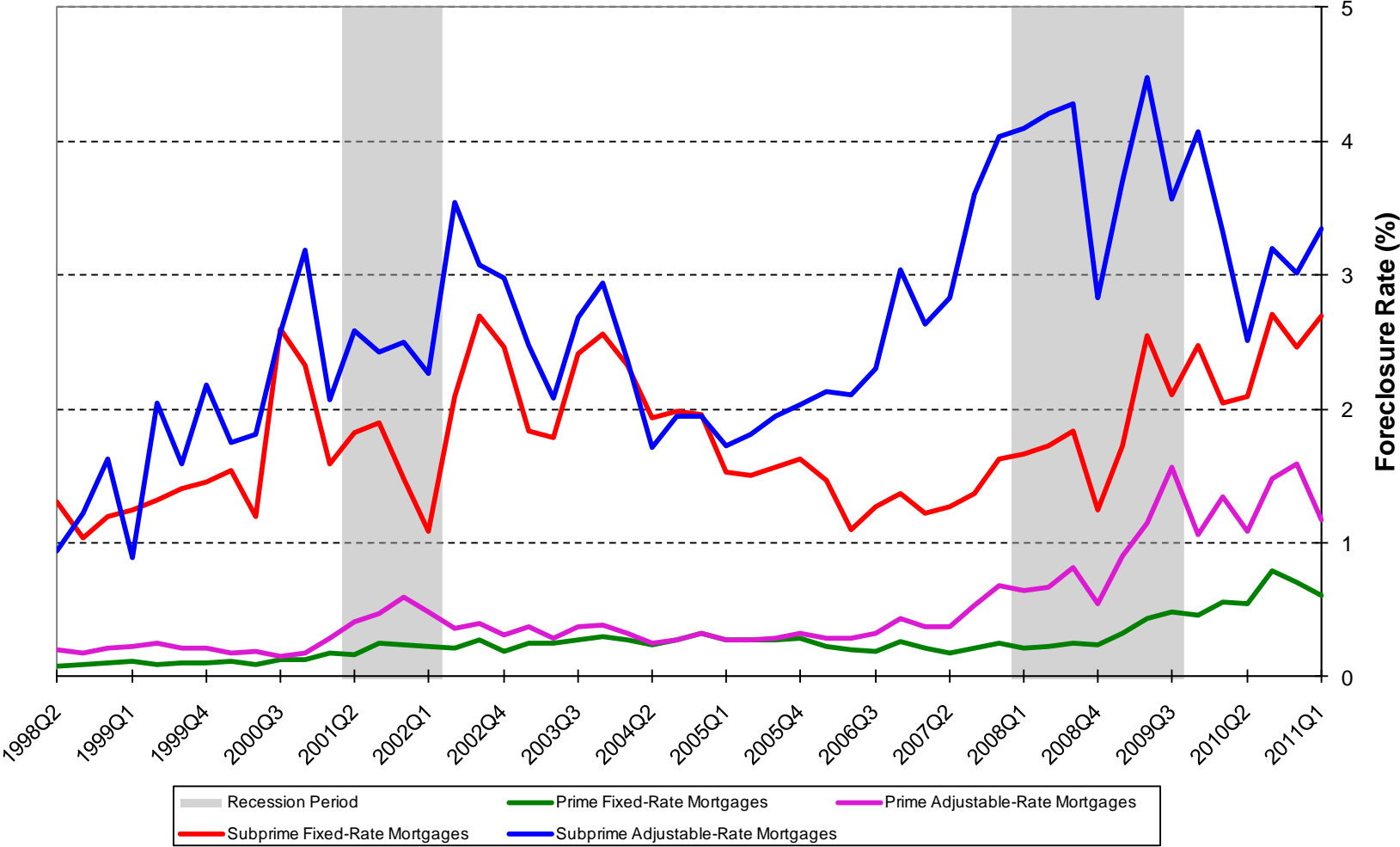
Source: Mortgage Bankers Association / Haver Analytics



North Carolina Residential Mortgage Foreclosure Rates

Not Seasonally Adjusted Data, 1998Q2 to 2011Q1

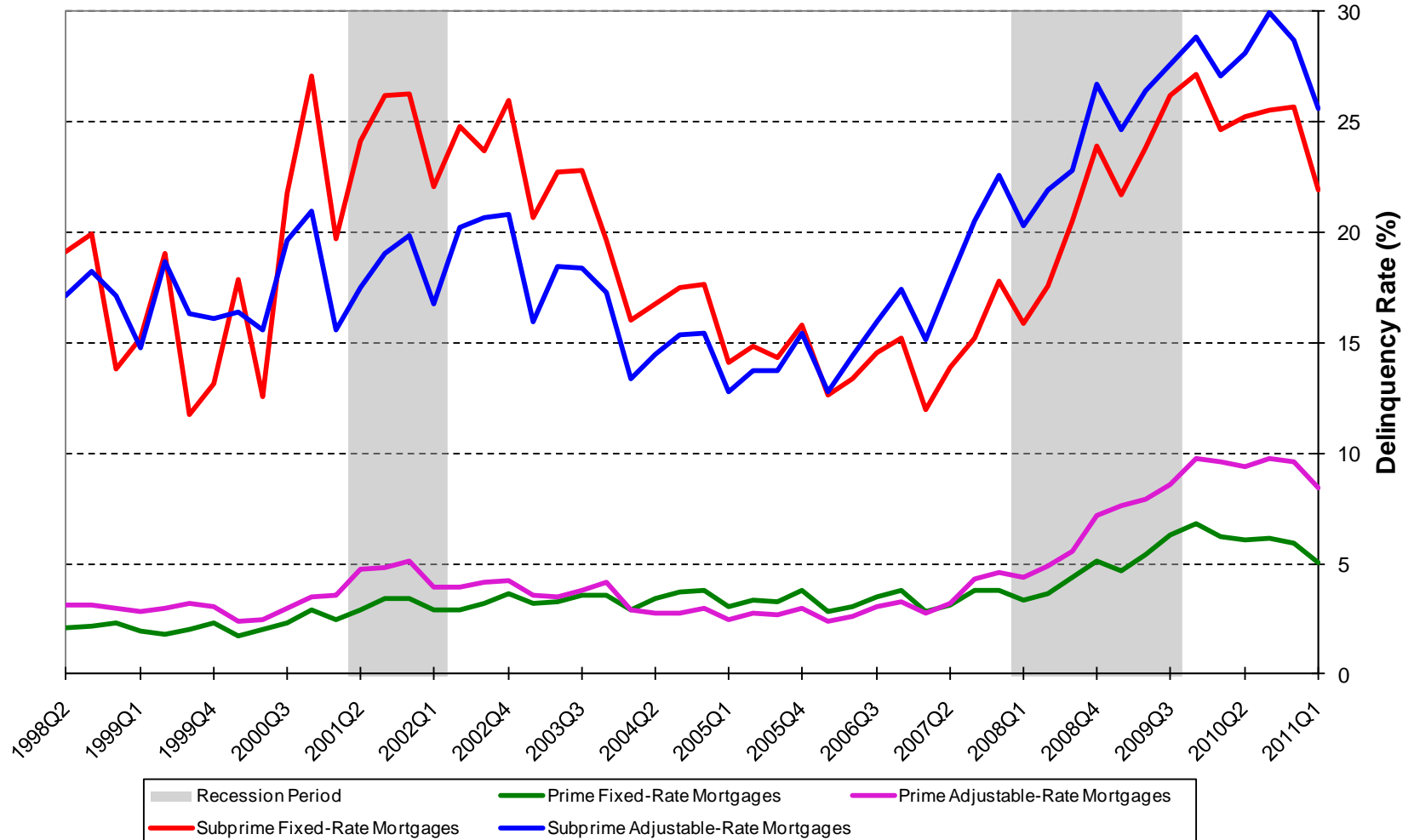
Source: Mortgage Bankers Association / Haver Analytics



South Carolina Residential Mortgage Delinquency Rates

Not Seasonally Adjusted Data, 1998Q2 to 2011Q1

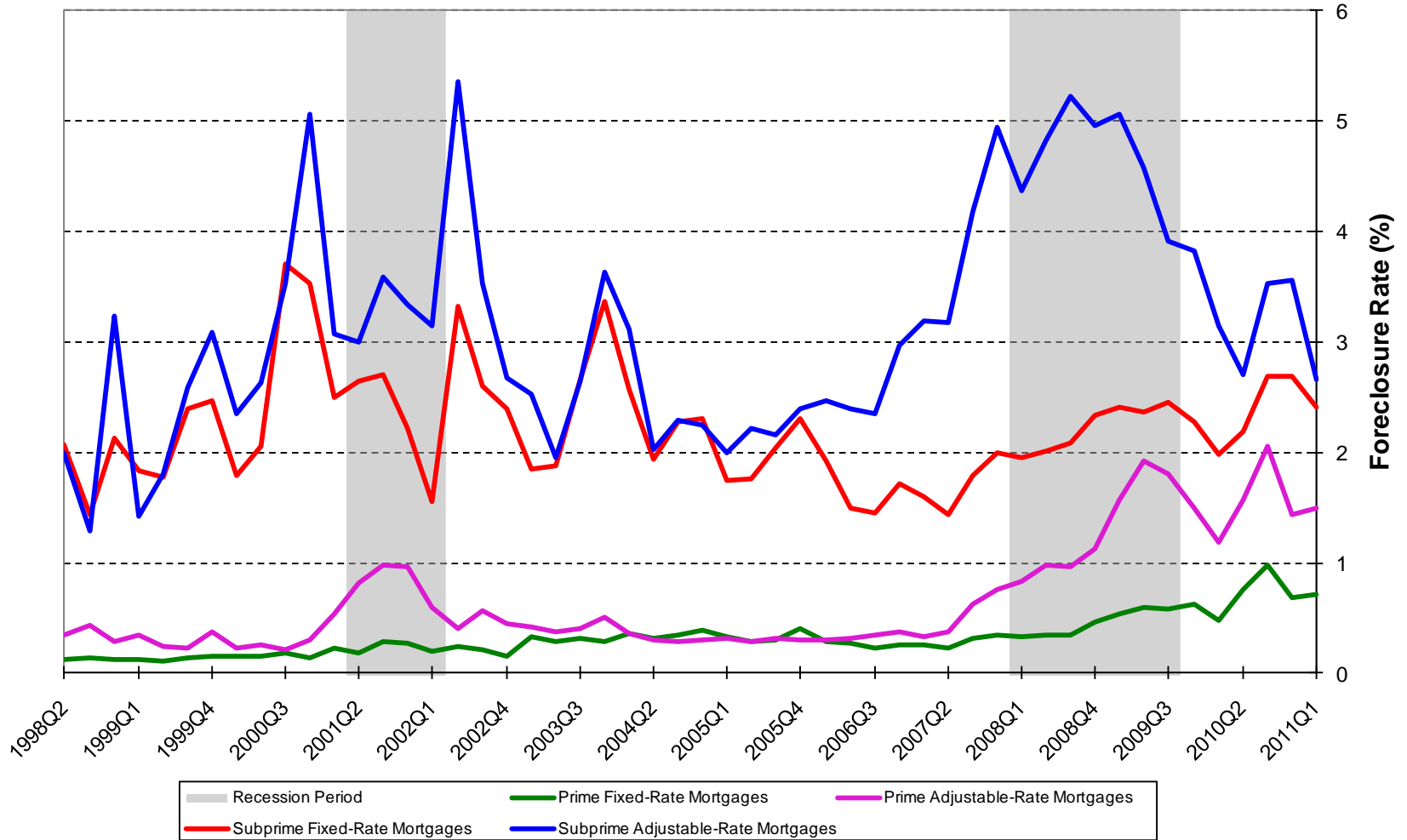
Source: Mortgage Bankers Association / Haver Analytics



South Carolina Residential Mortgage Foreclosure Rates

Not Seasonally Adjusted Data, 1998Q2 to 2011Q1

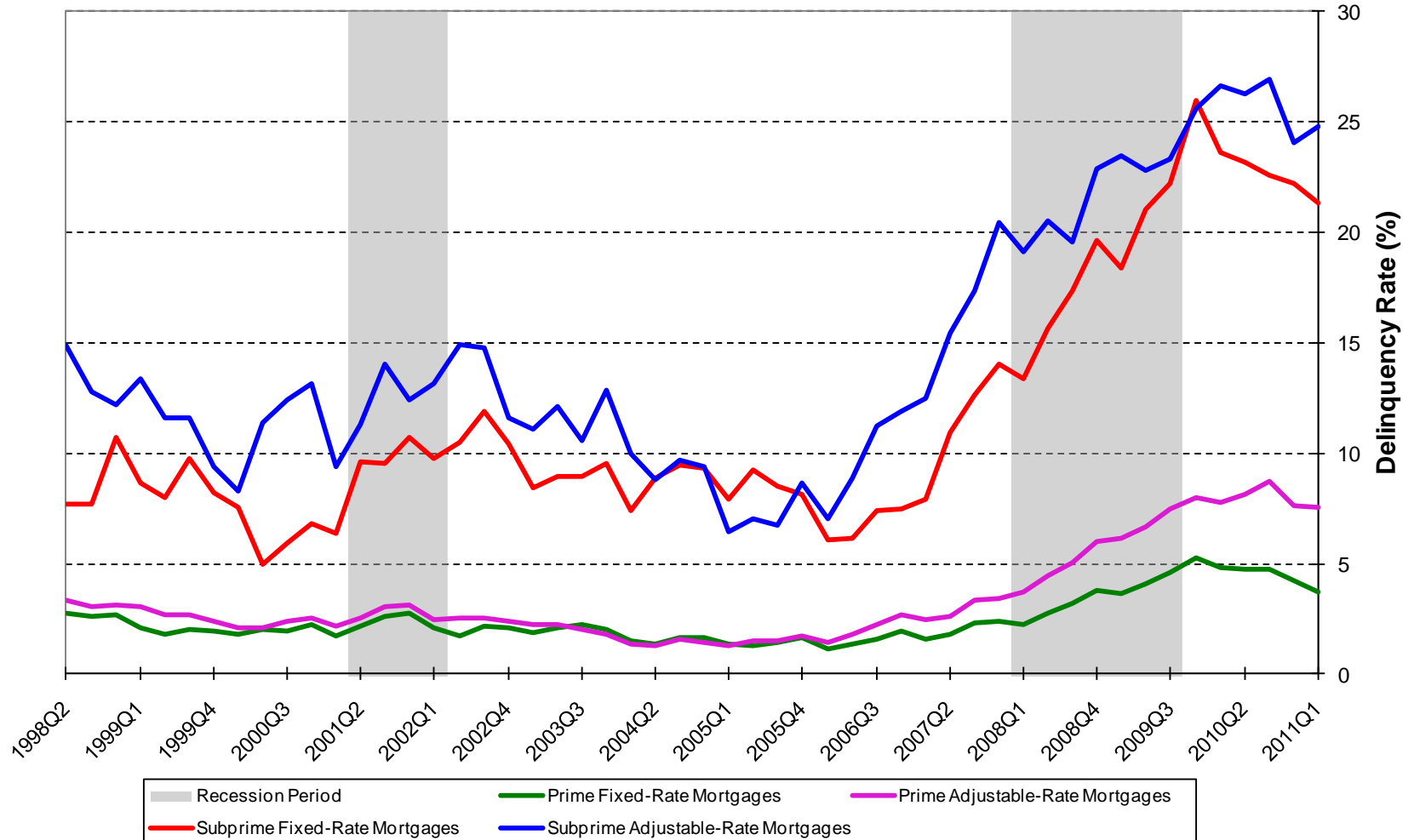
Source: Mortgage Bankers Association / Haver Analytics



Washington D.C. Residential Mortgage Delinquency Rates

Not Seasonally Adjusted Data, 1998Q2 to 2011Q1

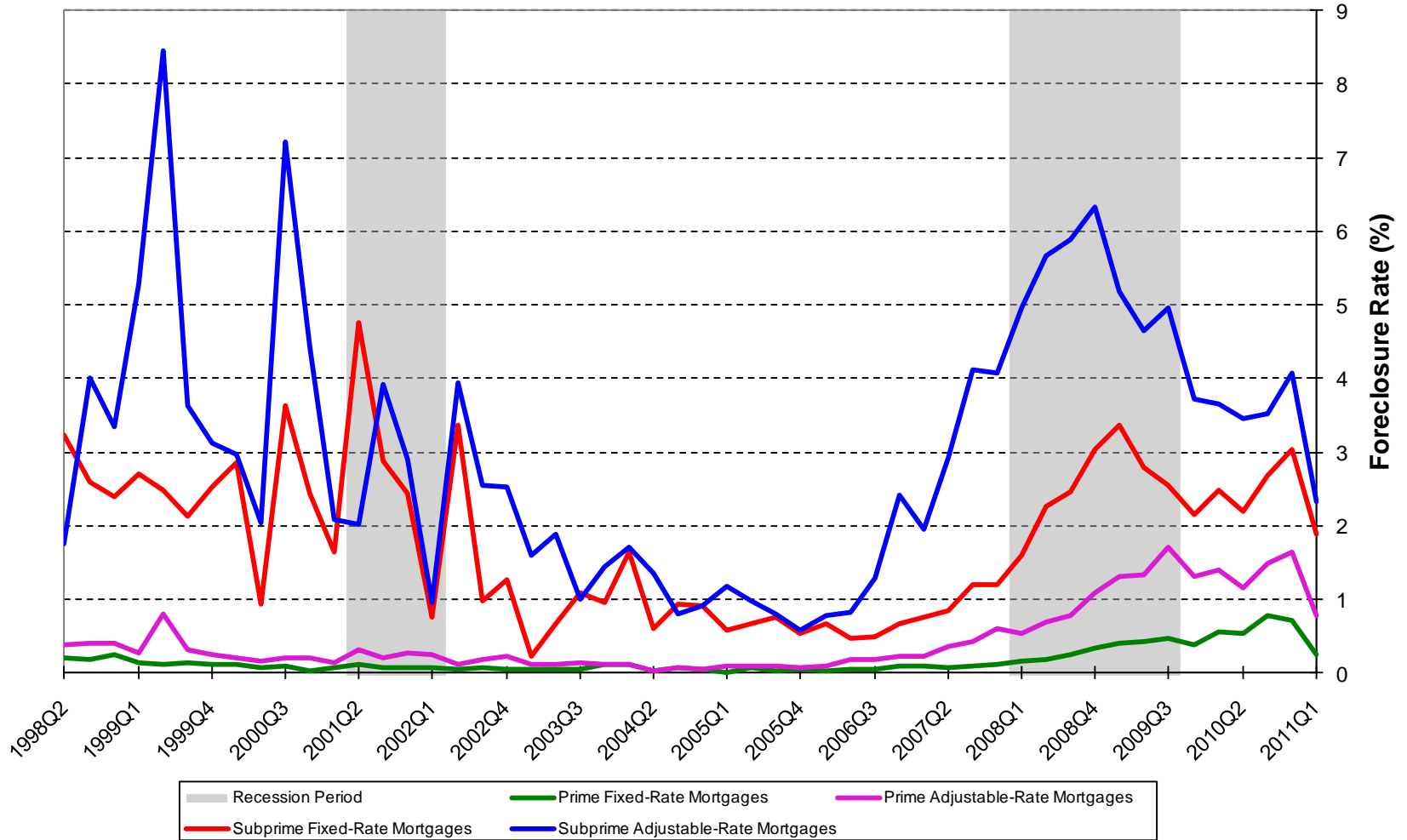
Source: Mortgage Bankers Association / Haver Analytics



Washington D.C. Residential Mortgage Foreclosure Rates

Not Seasonally Adjusted Data, 1998Q2 to 2011Q1

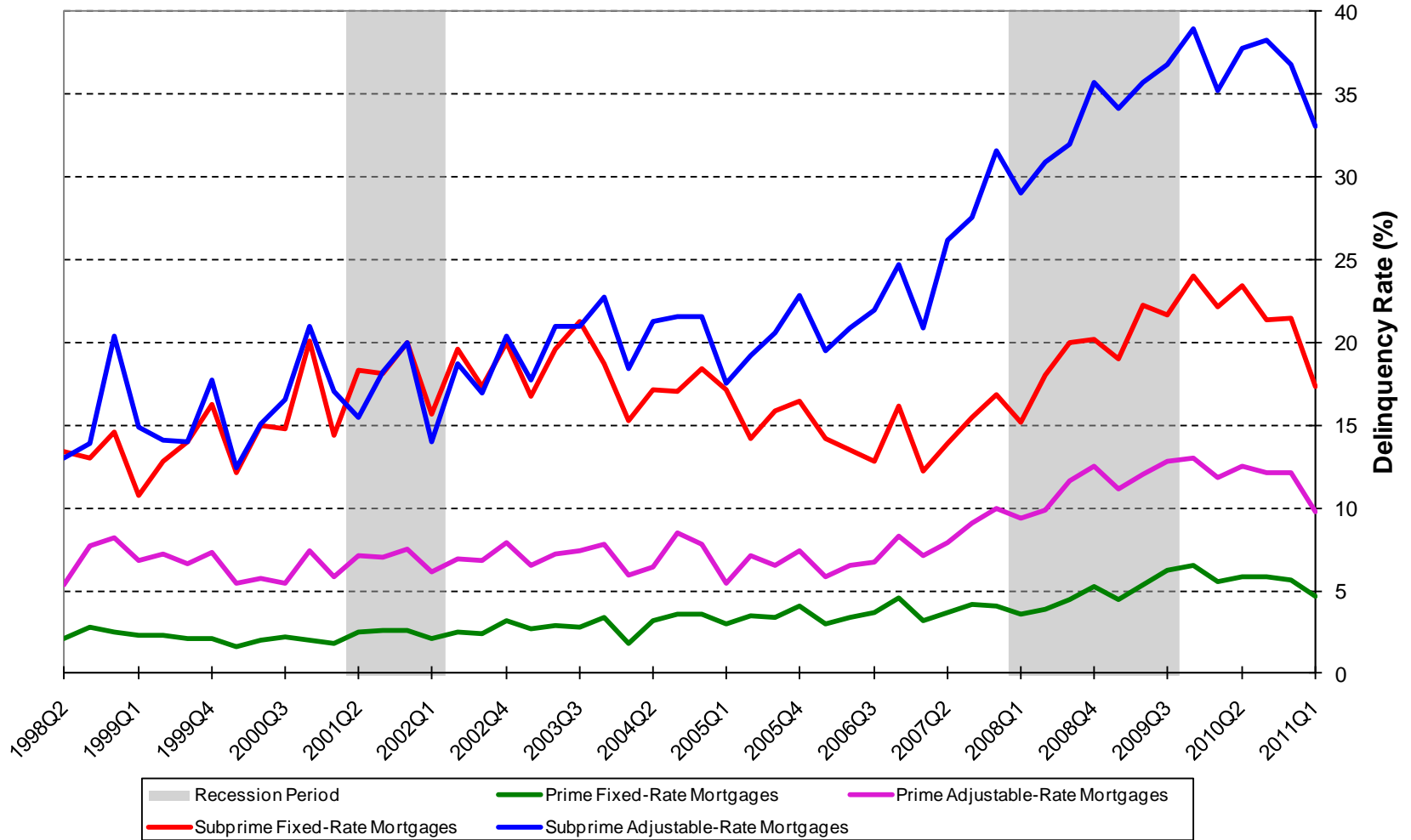
Source: Mortgage Bankers Association / Haver Analytics



West Virginia Residential Mortgage Delinquency Rates

Not Seasonally Adjusted Data, 1998Q2 to 2011Q1

Source: Mortgage Bankers Association / Haver Analytics



West Virginia Residential Mortgage Foreclosure Rates

Not Seasonally Adjusted Data, 1998Q2 to 2011Q1

Source: Mortgage Bankers Association / Haver Analytics

